

# A15QS Semiconductor Protection Fuses

A15QS Amp-Trap® Form 101 Semiconductor Protection fuses were designed for the specific protection of diodes and other semiconductor devices rated 150VAC/DC. The A15QS product line's compact design is perfect for those applications that have limitations on available space.

## Features/Benefits:

- Low I<sup>2</sup>t minimizes damage to protected components on short circuit
- Controlled arc voltage reduces stress to circuit components during fuse clearing
- Choice of mounting types provides options for unique termination requirements

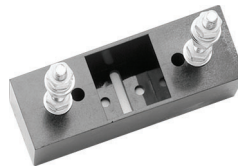
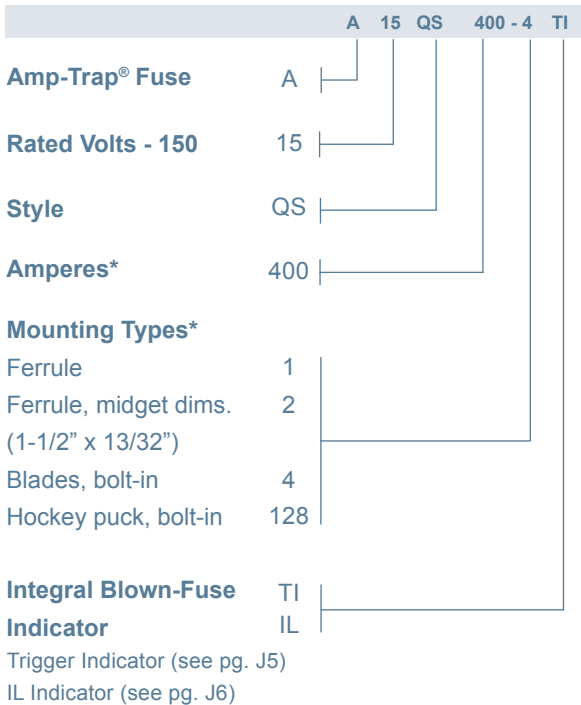
## Highlights:

- Fast acting
- Current limiting
- Low I<sup>2</sup>t
- Indicator options available

## Applications:

- Protection of heavy duty devices such as electrochemical rectifiers

## Catalog Numbering System



## Single Pole Fuse Blocks for A15QS Fuses

Fuse Ampere Rating	Catalog No.
1-30	30311
31-60	U71006
500-600	P243G
40-450	P243D
800	ISC375



## Ratings:

- Volts** : 150VAC / DC
- Amps** : 1 to 6000A
- I.R.** : 100kA I.R. AC
- : 100kA I.R. DC

## Approvals:

- UL recognized component UL File E60314
- AC: UL guide no. JFHR2 (1-4000A)
- DC tested to UL standard 198L parameters (1-4000A)



\* For ampere ratings and types not listed, consult the factory.

\*\* For harsh duty applications, refer to the A13X product family. Consult the factory or A13X application information.

# A15QS Semiconductor Protection Fuses

## Catalog Numbers (amps)

Catalog No.	Dimen. Fig.	Catalog No.	Dimen. Fig.	Catalog No.	Dimen. Fig.	Catalog No.	Dimen. Fig.
A15QS1-2	1	A15QS70-4	2	A15QS350-4TI	2	A15QS2000-128IL	5
A15QS2-2	1	A15QS70-4TI	2	A15QS400-4	2	A15QS2500-128	4
A15QS3-2	1	A15QS80-4	2	A15QS400-4IL	3	A15QS2500-128IL	5
A15QS4-2	1	A15QS80-4TI	2	A15QS400-4TI	2	A15QS3000-128	4
A15QS5-2	1	A15QS90-4	2	A15QS450-4	2	A15QS3000-128IL	5
A15QS6-2	1	A15QS100-4	2	A15QS450-4IL	3	A15QS3500-128	6
A15QS7-2	1	A15QS100-4TI	2	A15QS500-4	2	A15QS4000-128	6
A15QS8-2	1	A15QS130-4	2	A15QS500-4IL	3	A15QS4000-128IL	7
A15QS10-2	1	A15QS130-4TI	2	A15QS600-4	2	A15QS4500-128	8
A15QS12-2	1	A15QS150-4	2	A15QS600-4IL	3	A15QS4500-128IL	
A15QS15-2	1	A15QS150-4IL	3	A15QS800-4	2	A15QS5000-128	8
A15QS20-2	1	A15QS150-4TI	2	A15QS1000-4	2	A15QS6000-128	8
A15QS25-2	1	A15QS175-4TI	2	A15QS1000-4IL	3		
A15QS30-2	1	A15QS200-4	2	A15QS1000-4TI	2		
A15QS35-1	1	A15QS200-4IL	3	A15QS1000-128	4		
A15QS40-1	1	A15QS250-4	2	A15QS1000-128IL	5		
A15QS40-4TI	2	A15QS250-4TI	2	A15QS1200-128	4		
A15QS45-1	1	A15QS300-4	2	A15QS1200-128IL	5		
A15QS50-1	1	A15QS300-4TI	2	A15QS1500-128	4		
A15QS50-4	2	A15QS300-4IL	3	A15QS1500-128IL	5		
A15QS60-1	1	A15QS350-4	2	A15QS2000-128	4		

\* For ampere ratings and styles not listed, call Technical Services at 978-465-4853.

## Dimensions

Outline Ref.	Mounting Type	Fig.	Dimensions - Inches (mm)								Tap	
			A	B	C	D	E	F	G	H		
A15QS1 to 30	2	1	.50 (38.1)	.41 (10.4)	-	-	-	-	-	-	-	-
15QS35 to 60	1	1	2.00 (50.8)	.81 (20.6)	-	-	-	-	-	-	-	-
A15QS20 to 450	4, 4TI*, 4IL*	2, 3*	2.66 (67.6)	1.13 (28.7)	1.16 (29.5)	2.19 (55.6)	1.91 (48.5)	.31 (7.9)	.74 (22.4)	.13 (4.8)	-	-
A15QS500 to 1000	4, 4TI*, 4IL*	2, 3*	3.50 (88.9)	1.50 (38.1)	1.25 (31.8)	2.56 (65.0)	1.94 (49.3)	.41 (10.4)	1.00 (25.4)	.25 (6.4)	-	-
A15QS750 to 2000	128, 128IL*	4, 5*	1.88 (47.8)	2.00 (50.8)	1.63 (41.4)	1.75 (44.5)	1.00 (25.4)	-	-	-	-	3/8-24-1/2 Deep
A15QS2500 to 3000	128, 128IL*	4, 5*	1.88 (47.88)	3.00 (76.2)	1.63 (41.4)	2.50 (63.5)	1.50 (38.1)	-	-	-	-	1/2-20-1/2 Deep
A15QS3500 to 4000	128, 128IL*	6, 7*	1.88 (47.88)	3.50 (88.9)	1.63 (41.4)	3.00 (76.2)	1.06 (27.0)	1.06 (27.0)	-	-	-	1/2-20-1/2 Deep
A15QS4500 to 6000	128	8	2.38 (60.5)	5.75 (146)	1.88 (47.7)	5.00 (127)	1.50 (38.1)	1.50 (38.1)	-	-	-	1/2-20-1/2 Deep

\* Optional Trigger Indicator (TI) and (IL) indicator.

